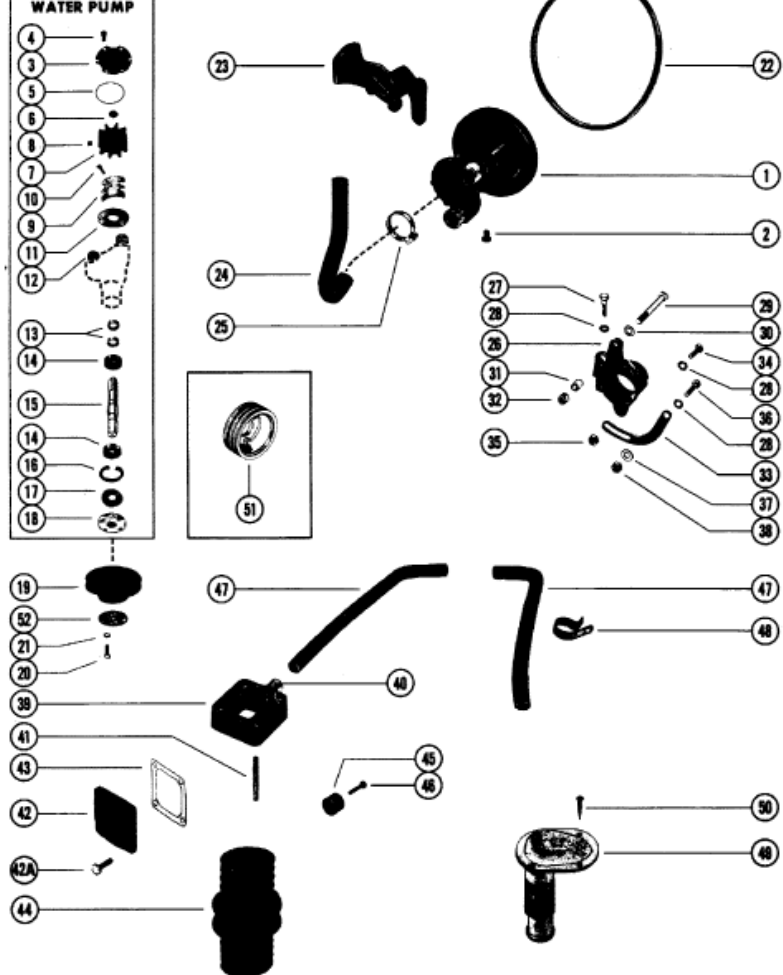


**BREAKDOWN OF WATER PUMP**



**Parts List**

| Ref | Class | Part     | Description                 | Qty | Comment | Footnote |
|-----|-------|----------|-----------------------------|-----|---------|----------|
| -   |       | 61651A 3 | INSTALLATION KIT, FRESH WAT | 1   |         |          |
| 1   | 46    | 72774A11 | WATER PUMP ASSEMBLY, COP    | 1   |         |          |
| 2   | 22    | 39072    | PLUG, PIPE - DRAIN          | 1   |         |          |
| 3   |       | 59155    | COVER, WATER PUMP           | 1   |         |          |
| 4   | 10    | 28635    | SCREW, COVER TO WATER I     | 6   |         |          |
| 5   | 25    | 59712    | "O" RING, WATER PUMP COV    | 1   |         |          |
| 6   | 19    | 59504    | PLUG, IMPELLER              | 1   |         |          |
| 7   | 47    | 59362A 1 | IMPELLER                    | 1   |         |          |
| 8   | 28    | 56662    | KEY, IMPELLER DRIVE         | 1   |         |          |
| 9   |       | 59363A 1 | CAM SEGMENT ASSEMBLY        | 1   |         |          |
| 10  | 10    | 60777    | SCREW, CAM SEGMENT ATT      | 1   |         |          |
| 11  |       | 59503    | WEAR PLATE, IMPELLER        | 1   |         |          |
| 12  | 23    | 47511    | SLEEVE, WATER PUMP          | 2   |         |          |
| 13  | 26    | 23300    | OIL SEAL, WATER PUMP SHA    | 2   |         |          |
| 14  | 30    | 72961    | BALL BEARING, WATER PUM     | 2   |         |          |
| 15  |       | 59501    | SHAFT, WATER PUMP           | 1   |         |          |
| 16  | 53    | 23720    | RING, SNAP - BALL BEARING   | 1   |         |          |
| 17  | 26    | 72785    | OIL SEAL, WATER PUMP SHA    | 1   |         |          |
| 18  |       | 47530    | HUB, WATER PUMP PULLEY      | 1   |         |          |
| 19  |       | 73798    | PULLEY, WATER PUMP          | 1   |         |          |
| 20  | 10    | 47277    | SCREW, WATER PUMP PULLE     | 4   |         |          |
| 21  | 13    | 39107    | LOCKWASHER, WATER PUMP      | 4   |         |          |
| 22  | 57    | 74271    | "V" BELT, WATER PUMP        | 1   |         |          |
| 23  |       | 61859    | BRACKET, ALTERNATOR         | 1   |         |          |
| 24  | 32    | 54906    | HOSE, SEA WATER PUMP TO I   | 1   |         |          |
| 24  | 32    | 57230    | HOSE, PUMP TO OIL COOLER    | 1   |         |          |
| 24  | 32    | 57231    | HOSE, OIL COOLER TO HEAT E  | 1   |         |          |
| 25  | 54    | 32780    | CLAMP, HOSE TO SEA WATER    | 2   |         |          |
| 26  |       | 49581    | BRACKET, WATER PUMP TO A    | 1   |         |          |
| 27  | 10    | 34354    | SCREW, CLAMPING - WATER F   | 1   |         |          |
| 28  | 13    | 35048    | LOCKWASHER, WATER PUMP      | 3   |         |          |
| 29  | 10    | 52409    | SCREW, WATER PUMP BRACK     | 1   |         |          |
| 30  | 12    | 20553    | WASHER, WATER PUMP BRAC     | 1   |         |          |
| 31  | 23    | 33186    | BUSHING, WATER PUMP BRAC    | 1   |         |          |
| 32  | 11    | 23161    | NUT, WATER PUMP BRACKET     | 1   |         |          |
| 33  |       | 61860    | BRACE, WATER PUMP BRACK     | 1   |         |          |
| 34  | 10    | 34353    | SCREW, WATER PUMP BRACK     | 1   |         |          |
| 35  | 11    | 32219    | NUT, WATER PUMP BRACKET     | 1   |         |          |
| 36  | 10    | 26632    | SCREWS WATER PUMP BRAC      | 1   |         |          |
| 37  | 12    | 34714    | WASHER, WATER PUMP BRAC     | 1   |         |          |